

# KARIBAN

K3015

## Dames-t-shirt V-hals korte mouwen

- Modieuze, trendy snit.
- Valt soepel en licht.
- Collectie heel comfortabele T-shirts.

97% katoen / 3% elasthan. Chiné kleuren: 87% katoen / 9% viscose / 4% elasthan. V-hals. Dubbel stiksel aan mouwuiteinden en onderkant. De moderne getailleerde snit zijn volgens de laatste modetrends. Gecertificeerd STANDARD 100 by OEKO-TEX® N° CQ1007/7, IFTH.

### Maten

S - M - L - XL - XXL



Alle rechten voorbehouden ©

### Bestaat ook in



K3014

### Bijkomende informatie

#### Logistiek



### Kleuren



White



Black



Navy



Light grey  
heather

# KARIBAN

REFERENCE : K3015

SIZES : S\_M\_L\_XL\_XXL

**COMPOSITION :**

Main fabric : Combed cotton / Elastane single jersey 97/3 silky touch - 160 For solid colors 97%cotton / 3%elastane

Main fabric : Carded cotton / Viscose / Elastane single jersey 87/9/4 silky touch - 160 For heather colors 87%cotton/9% viscose/4%elastane

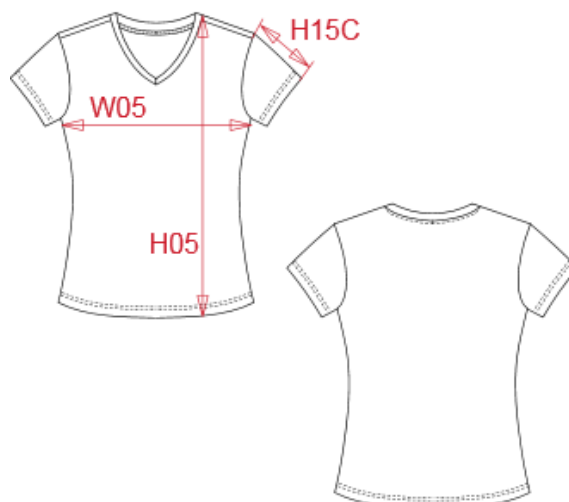
**WEIGHT :**

Main fabric : 160 gsm

Main fabric : 160 gsm

**ARTICLE WEIGHT :**

112 gr/pc



DESCRIPTION
<b>Français :</b> T-shirt col V manches courtes femme
<b>English :</b> Ladies' V-neck short-sleeved t-shirt
<b>Nederlands :</b> Dames-t-shirt V-hals korte mouwen
<b>Deutsch :</b> Kurzarm-Damen-T-Shirt mit V-Ausschnitt
<b>Español :</b> Camiseta con elastán cuello de pico mujer
<b>Italiano :</b> T-shirt donna maniche corte con collo a V
<b>Português :</b> T-shirt de senhora decote V de manga curta

COLORS	PANTONE SERIGRAPHIE
Black	Black
White	White
Light grey heather	Based on 877C
Navy	433C

MEASUREMENT						
Description	S	M	L	XL	XXL	
<b>W05 (L)</b> 1/2 largeur poitrine à 1.5cm de l'emmanchure / 1/2 chest width at 1.5cm below armhole	44	47	50	53	56	
<b>H09 (L)</b> Hauteur totale devant / Front total height	62	64	66	68	70	
<b>H15C (M)</b> Longueur manche courte / Short sleeve length	13,75	14,50	15,25	16	16,75	

CARE LABEL

PACKING	
Box	50 pcs / box S => L:60cm W:40cm H:19cm GW:6.90kg NW:5.20kg M => L:60cm W:40cm H:19cm GW:7.40kg NW:5.70kg L => L:60cm W:40cm H:19cm GW:7.60kg NW:5.90kg XL => L:60cm W:40cm H:22cm GW:8.50kg NW:6.70kg XXL => L:60cm W:40cm H:22cm GW:8.80kg NW:7.00kg