

KARIBAN

REFERENCE : K382

SIZES : S_M_L_XL_XXL_3XL

COMPOSITION :

Main fabric : Combed Cotton single jersey - 180 100%cotton

Main fabric : Combed Cotton / Viscose single jersey 90/10 -
180 For heather colors 90%cotton / 10%viscose

WEIGHT :

Main fabric : 180 gsm

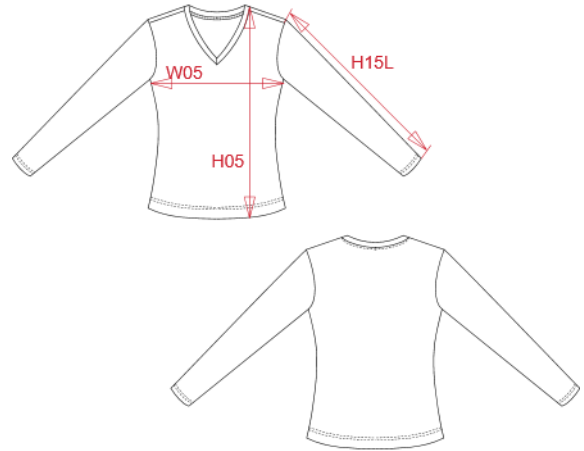
Main fabric : 180 gsm

TECHNICAL DETAIL :

Enzyme washed fabric

ARTICLE WEIGHT :

170 gr/pc



DESCRIPTION	
Français :	T-shirt femme manches longues encolure V
English :	Ladies long sleeve V-neck T-shirt
Nederlands :	Dames T-shirt met V-hals en lange mouwen
Deutsch :	Damen langarm-T-shirt mit V-ausschnitt
Español :	Camiseta de manga larga y cuello de pico para mujer
Italiano :	T-shirt donna maniche lunghe scollo a V
Português :	T-shirt de senhora de manga comprida e decote V

COLORS	PANTONE SERIGRAPHIE
White	White
Black	Black
Navy	433C
Dark grey	447C
Red	200C
Orange	1585C
Sky blue	278C
Yellow	1235C
Light royal blue	653C
Dark khaki	418C
Chocolate	439C
Tropical blue	7468C
Oxford grey	Based on Cool gray 7C
Kelly green	7727C
Fuchsia	7425C
Purple	7447C
Wine	504C
Lime	367C
Forest green	5605C
Light sand	482C

MEASUREMENT							
Description	S	M	L	XL	XXL	3XL	
H05 (L) Hauteur totale / Total height	62	64	66	68	70	72	
W05 (L) 1/2 largeur poitrine à 1.5cm de l'emmanchure / 1/2 chest width at 1.5cm below armhole	45	48	51	54	57	60	
H15L (L) Longueur manche longue / Long sleeve length	58,75	59,75	60,75	61,75	62,75	63,75	

CARE LABEL				

PACKING	
Box	50 pcs / box S => L:60cm W:40cm H:cm GW:kg NW:kg M => L:60cm W:40cm H:cm GW:kg NW:kg L => L:60cm W:40cm H:cm GW:kg NW:kg XL => L:60cm W:40cm H:cm GW:kg NW:kg XXL => L:60cm W:40cm H:cm GW:kg NW:kg 3XL => L:60cm W:40cm H:cm GW:kg NW:kg

K382

Dames t-shirt V-hals lange mouwen

100% enzymbehandeld gekamd katoen.
 (Oxford Grey: 90% katoen / 10% viscose.
 Nektape (ton-sur-ton voor White, Dark
 Grey voor Oxford Grey en Oxford Grey
 voor de overige kleuren). Getailleerde snit.
 Afwerking met dubbele stiksels.

Catalogus
 p.94



Maten

S - M - L - XL - XXL - 3XL

Gram/m²

180 g/m²

Stuks per doos

50 10

Kleuren

