

B&C #E150 /women - TW 02T



Want the same style/shape but in a lighter fabric?
TRY THE B&C #E150

Want the same style/shape but in long sleeve?
TRY THE B&C #E190 LSL



DUO
CONCEPT
with B&C #E150
EXISTS IN B&C EXACT 150 /KIDS

REGULAR FIT

The modern short-sleeve T-shirt for women with contemporary look and the unchanged 150g fabric quality by B&C for 20 years.

Your #150bestchoice #basicttee

DUO	DUO	DUO	DUO	DUO	DUO
WHITE*	BLACK*	NAVY BLUE*	SPORT GREY*	ROYAL BLUE*	RED*
DUO	DUO	DUO	DUO	DUO	DUO
NATURAL	SAND	MILLENNIAL PINK	SOLAR YELLOW	GOLD	APRICOT
DUO	DUO	DUO	DUO	DUO	DUO
ORANGE	FIRE RED	DEEP RED	FUCHSIA	BURGUNDY	TURQUOISE
DUO	DUO	DUO	DUO	DUO	DUO
ATOLL	REAL TURQUOISE	DIVA BLUE	SKY BLUE	AZURE	DENIM
DUO	DUO	DUO	DUO	DUO	DUO
LIGHT NAVY	NAVY	COBALT BLUE	ELECTRIC BLUE	RADIANT PURPLE	URBAN PURPLE
DUO	DUO	DUO	DUO	DUO	DUO
PISTACHIO	ORCHID GREEN	KELLY GREEN	BOTTLE GREEN	URBAN KHAKI	MILLENNIAL KHAKI
DUO	DUO	DUO	DUO	DUO	DUO
ASH	DARK GREY	USED BLACK	BLACK PURE	BEAR BROWN	*COLOURS AVAILABLE IN 3XL

100% pre-shrunk ring-spun cotton

SPORT GREY: 85% PRE-SHRUNK RING-SPUN COTTON - 15% VISCOSE
ASH: 99% PRE-SHRUNK RING-SPUN COTTON - 1% VISCOSE

Single Jersey

145 g/m²

XS - S - M - L - XL - 2XL - 3XL*

10 pcs/pack & 100 pcs/carton

* ONLY AVAILABLE IN WHITE, BLACK, NAVY BLUE, SPORT GREY, ROYAL BLUE AND RED

#Style/Fit

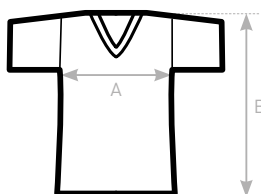
- Mainstream contemporary fit
- #allpurposes
- Side seams construction
- #feminineshape
- Thin collar rib to highlight modern neck opening #uptodate
- Body length allowing to be worn in and out #freedomofmovement
- Same 41 colours for men & women #perfectduo
- 7 sizes - XS to 3XL #fitsall
- Satin label #ultrasofttouch

#Quality/Handfeel

- Made of 100% cotton #protectmyskin
- #Oeko-Tex100
- Resistant fabric and soft handfeel
- #ringspun
- Unchanged proven B&C quality fabric
- #20years
- Middle weight fabric 150 gsm
- #whatevertheweather

#Printability/Decoration

- Very smooth and even surface for bright and crisp printing results
- #details
- Tested and approved for all standard printing techniques applicable on cotton #beinspired
- Folded in box to ease the decoration process #makemylifeeasy



SIZES [CM]

B&C #E150 /WOMEN TW 02T	XS	S	M	L	XL	2XL	3XL
A HALF CHEST	41	44	47	50	53	56	59
B BODY LENGTH FROM NECK POINT	58	60	62	64	66	68	70

OEKO-TEX®
CONFIDENCE IN TEXTILES
STANDARD 100
1501003 Centexbel
Tested for harmful substances.
www.oeko-tex.com/standard100



CGTW02T

#E150 Ladies' T-shirt

- Glad oppervlak, ideaal om te bedrukken.
- Voelt zacht aan en is comfortabel om te dragen.

100% voorgekrompen ringgesponnen katoen (Ash: 99% voorgekrompen ringgesponnen katoen / 1% viscose, Sport Grey: 85% voorgekrompen ringgesponnen katoen / 15% viscose). Fijne afwerking in ribboord voor een moderne look. Zijnaden. Comfortabele lichaamslengte. Moderne klassieke snit. Gesatineerd etiket. Oeko-Tex 100-certificaat. #basictshirt #trendy #ringspun Gecertificeerd STANDARD 100 by OEKO-TEX® N° 1501003X, Centexbel.

Maten

XS - S - M - L - XL - XXL - 3XL

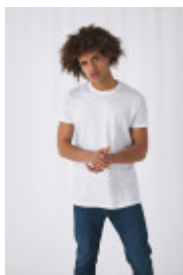


Alle rechten voorbehouden ©

Bestaat ook in



CG149



CGTU01T

Bijkomende informatie

Logistiek

- 1
- 100

Kleuren

