

KARIBAN

REFERENCE : K256

SIZES : S_M_L_XL_XXL_3XL_4XL

COMPOSITION :

Main fabric : Ring spun Combed Cotton pique preshrunk - 180
100%cotton

Main fabric : Ring spun Combed Cotton/Viscose pique
preshrunk 90/10 - 180 For heather colors 90%cotton / 10%
viscose

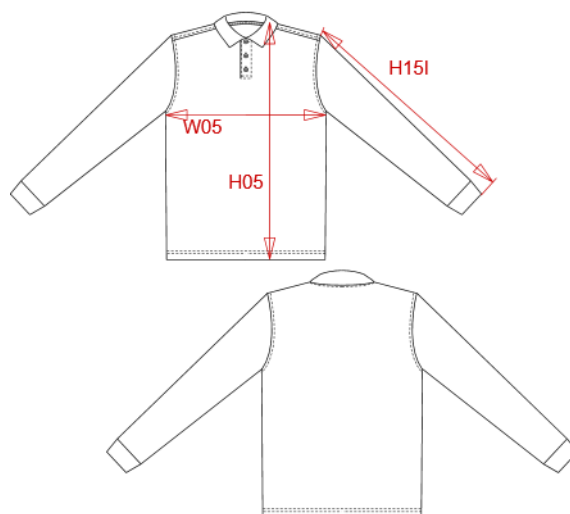
WEIGHT :

Main fabric : 180 gsm

Main fabric : 180 gsm

ARTICLE WEIGHT :

280 gr/pc



DESCRIPTION	
Français :	Polo piqué manches longues homme
English :	Men's piqué long sleeve polo shirt
Nederlands :	Piqué-herenpolo lange mouwen
Deutsch :	Herren Langarm-Polohemd. Baumwollpique
Español :	Polo piqué de manga larga para hombre
Italiano :	Polo piqué uomo maniche lunghe
Português :	Polo piqué de homem de manga comprida

MEASUREMENT							
Description	S	M	L	XL	XXL	3XL	4XL
H05 (M) Hauteur totale / Total height	70	72	74	76	78	80	82
W05 (M) 1/2 largeur poitrine / 1/2 chest width	50	53	56	59	62	65	68
H15B (M) Longueur manche avec poignet / Sleeve length with cuff	65,25	66,25	67,25	68,25	69,25	70,25	71,25

CARE LABEL				

PACKING	
Box	40 pcs / box S => L:60cm W:40cm H:26cm GW:10.00kg NW:8.10kg M => L:60cm W:40cm H:27cm GW:11.40kg NW:9.50kg L => L:60cm W:40cm H:29cm GW:12.80kg NW:10.10kg XL => L:60cm W:40cm H:30cm GW:12.80kg NW:10.90kg XXL => L:60cm W:40cm H:32cm GW:13.30kg NW:11.40kg 3XL => L:60cm W:40cm H:34cm GW:14.20kg NW:12.30kg 4XL => L:60cm W:40cm H:34cm GW:15.30kg NW:13.20kg

COLORS	PANTONE SERIGRAPHIE
White	White
Black	Black
Navy	433C
Red	200C
Dark grey	447C
Oxford grey	Based on Cool gray 7C
Light royal blue	653C
Orange	1585C
Yellow	1235C
Forest green	5605C
Wine	504C
Sky blue	278C
Tropical blue	7468C
Fuchsia	7425C
Kelly green	7727C